

# Welcome to Leicester College

Welcome to Leicester College, one of the largest and most successful colleges in the UK. We currently have over 28,000 learners studying with us on a wide range of courses, from many different backgrounds and with different ambitions and aspirations.

Working very closely with thousands of local and national companies, we provide training tailored specifically to the needs of their staff, and ensure that the training we offer equips our learners for future employment. We are an Associate College of De Montfort University and part of Leicester University's College and University Liaison Network. We work with these and other HE institutions to provide routes to Degree level in many subject areas.

Leicester College also has an excellent local and national reputation and our many awards and quality marks, ranging from membership of four National Skills Academies to achieving the Government's national award for customer service excellence and the Training Quality Standard for services to business, reflect this. This year alone we won national awards for our Learning and Skills Improvement Service (LSIS), Leading the learner voice Award for Community and Social Cohesion and a UK winner for the National Training Awards.

Our three campuses are all situated in the heart of Leicester, a vibrant and diverse city with a huge population of learners of all ages. All three campuses have recently been upgraded to an extremely high standard and offer some of the best and most up-to-date learning facilities in the area.

We want everyone who comes to Leicester College to have the best chance of success and we offer a wide range of support as well as opportunities to take part in cross-College activities to help you to get the most out of your time here.

We are only a phone call or email away and can answer any questions you have. So don't hesitate to contact us on 0116 224 2240 or [info@leicestercollege.ac.uk](mailto:info@leicestercollege.ac.uk).

I look forward to seeing you at Leicester College in the near future.



**Maggie Galliers CBE, Principal**

## ers Innovation



### Our Mission

To deliver a wide range of high quality learning experiences to support the diverse communities we serve and the personal, social and economic development of individuals and enterprises. We believe in **Learning for Success**.

### Our Goal

To be known locally and nationally for excellence.

### Core Values

- Raising aspirations, achieving ambitions.
- Demonstrating excellence in teaching, learning and support.
- Valuing diversity, promoting equality.
- Working together to get the best results.

### College Aims

#### Successful Learners

- Continually improve teaching, learning and support, leading to successful outcomes for learners.
- Deliver innovative and responsive services for businesses.

#### Investment

- Attract, develop and retain high performing staff.
- Create and maintain first-class facilities that support outstanding teaching and learning.
- Maintain a sound financial base and provide excellent value for money.

#### Innovation

- Adapt the curriculum to anticipate, stimulate and meet changing demand.
- Seek out opportunities to change and improve how we work.



# The credible alternative to university...

Leicester College offers a credible alternative for those wishing to study university-level courses.

By studying with us, you'll receive the same high standard of teaching you'd receive at university. You will receive substantial one-to-one time and pastoral support as the staff-to-learner ratio is higher than an average university. You can also study flexibly, on a part-time basis.

We've invested heavily in our campuses, meaning you can learn in first class, state-of-the-art facilities. Also, if you enrol on a course run in conjunction with one of our university partners you'll have access to the relevant services and facilities of the accrediting university.

Finally, by studying with us, you'll be learning on your doorstep – saving you the money you may otherwise spend living far away from home.



# Be part of our success

Leicester College is a successful place to study. We are one of the largest and most successful colleges in the UK, with a high proportion of our Higher Education learners going on to top-up their qualification to a full honours degree at a university – or choosing to embark on their chosen career.

To find out how you can be part of the success story, we have included all the information you need to apply for one of our University Level courses in the following pages.

You can also find advice on money matters, guidance for overseas learners and the services and support the College offers.

If you would like to know more, our advisors will be happy to help you with all your course-related queries, from choosing the right subject, to understanding the application process. Please call 0116 224 2240, email [info@leicestercollege.ac.uk](mailto:info@leicestercollege.ac.uk) or visit [leicestercollege.ac.uk](http://leicestercollege.ac.uk)

# Entry Requirements

## What is the UCAS Points System?

Learners offered a place on a university level course will be required to achieve a certain number of points in their exams.

The tables below, and right highlight the UCAS points awarded for different qualifications.

## What do I need to meet my points offer?

You can count points from many qualifications including:

- A levels and VCE A levels
  - AS levels (provided you also have at least two A levels or a 12 unit VCE Double Award) for degree courses.
- For HND courses, AS level points can

be counted as long as you have one A level or 6 unit VCE A level

- A levels, AS levels, and VCE A levels for degree courses provided you have at least one A level and one 6 unit VCE A level.
- BTEC or Level 3 National Certificate/Diploma
- BTEC Foundation Art and Design.

GCE/VCE Qualifications				BTEC Nationals			Points
GCE AS/A2 VCE	GCE/AS Double Award	GCSE A level	GCE Double Award	Award	Cert.	Diploma	
						DDD	360
						DDM	320
						DMM	280
			AA		DD	MMM	240
			AB				220
			BB		DM	MMP	200
			BC				180
			CC		MM	MPP	160
			CD				140
	AA	A	DD	D	MP	PPP	120
	AB						110
	BB	B	DE				100
	BC						90
	CC	C	EE	M	PP		80
	CD						70
A	DD	D					60
B	DE						50
C	EE	E		P			40
D							30
E							20
							10

Key: D = Distinction M= Merit P = Pass A to E = Grade Awarded

BTEC Nationals in Early Years		CACHE Diploma in Childcare and Education		Diploma in Foundation Studies (Art and Design)	Points
Theory		Practical	Theory		
Certificate	Diploma				
	DDD				320
				D	285
	DDM				280
	DMM		AA		240
				M	225
	MMM				220
DD			BB		200
				P	165
DM	MMP		CC		160
MM	MPP	D	DD	A	120
				B	100
MP	PPP	M	EE	C	80
				D	60
PP		P		E	40

Key: D = Distinction M= Merit P = Pass A to E = Grade Awarded

## Still Unsure?

For any queries about the points system and what this means, please call our Customer Service Centre on 0116 224 2240.

## English Language Requirements

As English is used for teaching and learning, you should have an appropriate standard of English. If you have not obtained, or do not expect to obtain your entry qualifications in English language, you must produce evidence of English language ability to GCSE standard or equivalent. Some courses still require GCSE English language or equivalent in addition to other entry qualifications

which may have been obtained in the English language. Please check the course entries for details.

Acceptable entry level equivalents to the GCSE are:

- band six or above of the International English Language Testing Service (IELTS) run by the British Council (a four-week pre-sessional English course will also need to be taken)
- Teaching of English as a Foreign Language (TOEFL) – 500 points or above for paper-based assessment, 250 points or above for computer-based assessment.

## Please note that:

- some subjects may require a minimum number of points in a particular A level or VCE A level
- some courses may accept Key or Functional Skills points as part of the points total
- adult learners without the normal entry qualifications but with relevant experience may be admitted.

For more details please see individual course entries.

# University Level Qualifications Framework

The term "Higher Education" is used to describe courses of study that fall within the Government's "Framework for Higher Education qualifications in England, Wales and Northern Ireland".

The majority of Higher Education courses at the College fall under the Intermediate category which we refer to as University Level Qualifications.

## Framework for Higher Education Qualifications (FHEQ)

Level 4	Higher National Certificate (HNC), and Foundation Studies (FS).
Level 5	Higher National Diplomas (HND) and Foundation Degrees (FD).
Level 6	Bachelor Degrees (BA, BSc), Bachelor Degrees with Honours (BA Hons), Graduate Certificates and Diplomas.
Level 7	Masters Degrees (MA, MSc), Integrated Master's Degrees, Postgraduate Certificates and Diplomas, Post-graduate Certificate in Education (PGCE),
Level 8	Doctorates



# How to Apply

## How to Apply to UCAS

Applications for all full-time Higher National Diplomas and Foundation Degrees should be made through the Universities and Colleges Admissions Service (UCAS). [www.ucas.com](http://www.ucas.com)

The UCAS website holds a comprehensive list of all Higher Education Institutions and their courses in the UK. To apply through UCAS you will need to register on their website and complete your application online. If you are currently studying at a school or college, you will need to apply through them using their “buzzword”. If you are not currently in education, you can apply as an “Individual”.

UCAS will accept applications from early September 2011. For the majority of courses, as long as your application is received before the deadline of 15 January 2012, it will receive equal consideration by Admissions Tutors.

## Art and Design

If you are applying for Art and Design courses there are two closing dates 15 January and 24 March 2012.

You are strongly advised to refer to the information for each course at each university or college so that you do not miss the deadlines. Visit the UCAS website [www.ucas.com](http://www.ucas.com) for the most up-to-date information.

## Completing the online application

Once you register online, gaining your own username and password, you will then be required to complete the different sections of the form.

**Personal details** – In this section you are asked to include further personal details which apply to your application. Some of the information you provide eg ethnic origin, will not be seen by the institutions you apply to and will not play a part in your application but this information is required by UCAS.

Please note in the “Personal Details” section, you will be required to state where the funding for your course will come from. If you are a UK citizen, this will most likely be your Local Authority (02LA).

**Choices** – This is where you state your choices. A maximum of five can be selected.

**Education** – This section enables you to list schools or colleges with qualifications already gained and those you may be studying currently.

**Employment** – This is where you can briefly list your employment history.

**Personal Statement** – This is your chance to sell yourself to the Admissions Tutor in terms of your skills, experience and qualities.

You are required to provide a reference to detail your suitability for academic study within your UCAS form. If you are currently studying, this should be a tutor or teacher at your school or college. If you are not in education, you should ask an employer or responsible person who knows you well.

The online system is easy to use and the application does not need to be completed in one sitting. It can be accessed anywhere the internet is available and altered as many times as required before it is submitted.

There is a printable guide and video available on the UCAS website which provides direct instructions on how to complete the application, and should be referred to at all stages. Once submitted, UCAS will contact you in writing to confirm your application. This letter will include your own Personal ID number, which you should use as a reference in all future correspondence with UCAS and your choice of institutions. You can also track the progress of your application by using the Track Progress section on the UCAS site once you have applied.

The UCAS code contains the following:

L36 W690  
Institution Code Course Code

Our Institution Code is L36. For HND Business, Computing and Foundation Degrees in Creative Sound Technology, Footwear and Children, Families and Community Health, Performing arts, and Photography and Video, these will be found under De Montfort University – D26. Select Campus Code G. For the Foundation Degree in Sports Coaching this can be found under University of Bedfordshire – B22. Select course code CX6D and campus code Y.

**How to Apply to Leicester College**  
For all part-time Higher National Certificates, Higher National Diplomas and Foundation Degrees and all Professional Diplomas, University Diplomas or Foundation Studies you should complete a Leicester College Application Form.

These are available from Leicester College Information Centres, based at all three of our campuses, or please call 0116 224 2240. Application Forms are also available on our website [www.leicestercollege.ac.uk](http://www.leicestercollege.ac.uk)

For overseas learners, please call +44 (0) 116 224 4111 to request an application form.

## Criminal Records Bureau (CRB) disclosure

This Disclosure provides details of a person’s criminal record including convictions, cautions and reprimands held on the Police National Computer and information held by local police forces. It may include details from lists held by the Departments of Health and Education of people considered unsuitable.

In exceptional circumstances only, on receipt of a completed disclosure application form and supporting documents, placements may commence before CRB checks have been completed.

Disclosure of a criminal record, pending prosecution and other relevant information may not bar you from the course. It will depend on the nature of the position, the background of offences and other relevant information.

Failure to declare convictions, cautions or pending prosecutions may disqualify you from attendance or result in disciplinary action which could lead to expulsion if the discrepancy comes to light after you start the course.

For more information on CRB Disclosures visit [www.crb.gov.uk](http://www.crb.gov.uk) or call 0870 90 90 822.

## International and Adult Learners

We welcome applications from overseas and adult learners who do not match the standard entry requirements but who can demonstrate a willingness and commitment to study, and have evidence of academic, professional or vocational experience in a related field.

Overseas learners will not be expected to attend an interview but will be expected to send either evidence of qualification or demonstrate related work experience for review by the admissions tutor.

Applicants are asked to provide contact details of their referee. A request is sent by email to the referee asking them to complete and submit a reference through our secure website.

For further overseas information please see page 100.

# Finances

## Full-time learners

### Tuition fees\*

At Leicester College, fees for courses depend on the course or programme that you decide to enrol on. It also depends on whether you are a “home or international learner”. In this country, the system of fees and bursaries has been designed to try and ensure that fees are not a barrier to participation in HE.

The Government has just passed legislation to change student tuition fees from 2012. If you are applying for entry in 2012, these new arrangements will affect you. There will be a minimum tuition charge of £6,000 per year and, in exceptional cases, universities will be able to charge higher contributions, up to a maximum of £9,000 per year.

**We are currently considering our position on the tuition charges for 2012, and hope to make a decision during 2011.**

For a “home” learner fees will be chargeable at the point of enrolment. If you have applied for a loan or grant, evidence of confirmation is required at this point. Please call us on 0116 224 2240 for more information.

If you attend a course run in conjunction with De Montfort University where fees are charged at the full rate you will be able to apply for a bursary. Bursaries are only available to “home” learners. For more information, please call 0116 224 2240.

If eligible, you will be able to apply for a “Student Loan for Fees” to cover these costs. This means that fees will be paid directly to the College on your behalf. This loan has to be repaid after you leave your course and when your earnings are more than £21,000 (currently £15,000, due to change to £21,000 from 2012).

### Grants\*

Full-time learners will be able to apply for a non-repayable maintenance grant of up to approximately £3,250. How much you receive will depend on your income and that of your household. If it is around £25,000 or less you are likely to be eligible for a full grant of approx £3,250. Partial grants are likely to be available for those with a household income of between £25,000 and £42,000. These grants will be paid in three instalments – one at the beginning of each term. You will need to apply to Student Finance England for assessment of your entitlement to a maintenance grant and for your tuition fee loan. You can access all the information you need from [www.direct.gov.uk](http://www.direct.gov.uk)

At Leicester College we do have a small Access to Learning Fund which is designed to help needy HE learners. Learners who may qualify for this fund MUST have already applied to Student Finance England and been accepted for an allocation. It is important to see one of our Welfare Advisors for more information regarding this fund.

### Student Loans for Maintenance\*

Financial help towards your living costs is also provided in the form of a Student Loan. The amount available depends on where you will be living while you study and your household income. The loan is paid in three instalments, one at the beginning of each term, directly into your bank account. You can find out more about the amount of loan available to you and how entitlement is assessed at [www.direct.gov.uk](http://www.direct.gov.uk)

### Repayment\*

You will not start paying back any of your loans until your earnings are above £21,000 (subject to government approval). Payments will be made through the tax system.

Graduates will then pay back 9% of their income each month above that level. Any outstanding debt will be wiped out after 30 years (currently 25 years). Further information can be found on the Department for Business, Innovation and Skills website [www.bis.gov.uk](http://www.bis.gov.uk)

Student Finance England will send more detailed information about the terms and conditions for your Student Loan. Please contact Student Finance England or our College Student Services on 0116 224 2240 for more information.

### Banking

If you do not already have a bank account you should arrange a student account with one of the high street banks as soon as you have a confirmed offer of a place on your

course. We recommend shopping around. Things to consider include accessibility to a branch in Leicester (and home town if necessary), overdraft limits, interest rates and repayment terms after graduation.

## Part-time learners

### Grants\*

There is a national scheme of grants towards part-time Higher Education course expenses. Please contact us on 0116 224 2240.

All of these grants are means-tested and to qualify you must be studying at least 25% of a full-time course. For more information about assessment and exact amounts you should access [www.direct.gov.uk](http://www.direct.gov.uk)

### Disabled Learners

If you are a full or part-time disabled learner eg, you have a hearing or visual impairment, dyslexia, mental health issues, physical impairment, etc, you may be eligible for additional support in the form of a Disabled Students’ Allowance (DSA).

There is an assessment process and you should ring 0116 224 2240 and ask for precise information about this. When an assessment has been completed and an allowance approved, any support provided will be funded by Student Finance England. You will need to complete a form DSA1 which you can download from the website [www.direct.gov.uk](http://www.direct.gov.uk)

### Other support

Welfare Advisers at the College will be able to tell you about any additional support available including the Access to Learning Fund. It is recommended that all prospective Higher Education learners talk to a Welfare Adviser before enrolling to maximise any potential entitlement to financial support.

The Welfare Service is accessible all year-round and can advise on funding, banking, welfare benefits, fee status, debts or other financial matters. Please call 0116 224 2240.

Please note: The amounts quoted may change as precise amounts for 2012 are not available at the time of going to press but usually any increases are linked to the rate of inflation. It is recommended that you check [www.direct.gov.uk](http://www.direct.gov.uk) for the most up-to-date information.

In general, individuals who are subject to any immigration control will not qualify for fee or living-cost support. The regulations concerning fee status are complex – please call our Welfare Advisers on 0116 224 2240 for advice on personal circumstances.

### International Learners

If you are an European Union (EU) National and have lived in the UK for three years (not as a learner) prior to the

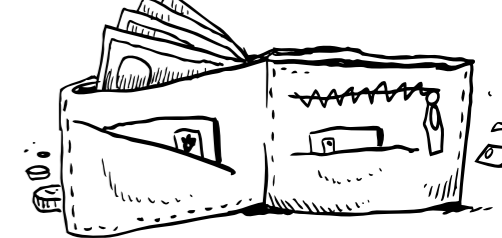
start of your course, you will be eligible to apply for tuition fee and living-cost support and you should apply to Student Finance England.

If you are an International learner, you will be expected to pay a deposit, of £1,500 and if you decide to use an instalment plan, the remaining total will need to be paid by October.

If you are an EU National but do not fulfil the residency requirements, you will be charged the same fees but will not be eligible for living-cost support. You should check information on the Student Finance England website. Asylum Seekers are not eligible for any Higher Education funding.

Refugees who have been granted “Indefinite Leave to Remain” are classed as “Home Learners” and are eligible for fee and living cost support. Refugees apply to Student Finance England the same way as other UK learners.

If you have been granted Exceptional Leave to enter or remain in the UK, you must have been resident in the UK for at least three years before the start of the academic year to qualify for assistance. Other learners from outside the UK or EU, please refer to the International Learner section on page 100.



**\* At the time of going to press there are no precise details available regarding amounts that will be available and how entitlement/eligibility will be calculated. It is recommended that you access [www.direct.gov.uk](http://www.direct.gov.uk) which provides the most up to date information.**

# International Learners

Applications from International learners who do not match the standard entry requirements but who can demonstrate a willingness and commitment to study, and have evidence of academic, professional or vocational experience in a related field, are welcomed.

International learners will not be expected to attend an interview but will be expected to send either evidence of qualification or demonstrate related work experience for review by the admissions tutor.

Comprehensive International learner information, including details on immigration, is available from the International Office on +44 (0) 116 224 4111.

## Fees and Visas

All International learners from outside the European Union will be charged the full cost of their courses. Precise figures for 2012 entry are not yet available.

As a guide, the full-time fees for 2011 to 2012 ranged from £4,950 to £7,900 per year, plus any exam and/or materials fees. A £1,500 deposit should be paid in full before commencing the course, the balance being due on commencement. Any Confirmation of Acceptance in support of your Tier 4 visa should be provided on receipt of the deposit. If you are on a student visa you cannot

study for less than 15 hours per week. To allow sufficient time for your application to be processed and for you to obtain a student visa, you should send your application in at least eight weeks before the start of the course. In all cases, full financial guarantees are required to ensure all payments can be made.

If you are an International learner who has been studying at Leicester College and you want to progress to Higher Education at the University of Leicester, you will receive a 10% discount on the first year of your fees at the university.

## English Language requirements

As English is used for teaching and learning, you should have an appropriate standard of English. We can only accept the appropriate result in English Language tests described by the UK Border Agency (UKBA) on its website. To find out more please visit [www.ukvisas.gov.uk](http://www.ukvisas.gov.uk).

**Please note, this is the minimum requirement. For some of our courses we do ask for even higher results than the UK Border Agency (UKBA).**

Some courses still require GCSE English language or the equivalent in addition to other entry qualifications which may have been obtained in the English language. Please check the course entries for details.

Acceptable entry level equivalents to the GCSE are:

- Band six or above of the International English Language Testing Service (IELTS 6) run by the British Council
- Teaching of English as a Foreign Language (TOEFL) – 500 points or above for paper-based assessment, 250 points or above for computer-based assessment.

## Entry requirements

International learners applying for a course at Leicester College are required to have reached an equivalent educational standard to that required of UK applicants.

Learners can send evidence of qualifications, work experience, and portfolio electronically (or by post) to the College. Following receipt of this work an interview by phone will be conducted.

## Induction

Our advisers offer practical help in finding accommodation, setting up a bank account and meeting other learners.

For further information, please call our International Office on +44 (0)116 224 4111.



**“When I first came to College, I was scared and nervous. Now I enjoy studying at Leicester College. I feel comfortable because everyone is treated equally.”**

# Student Services

**Student Services offers a full range of impartial information, advice, guidance and support.**

**Student Services is available on all three campuses, which you can visit:**  
**Monday to Thursday 9am to 5pm**  
**Friday 9am to 4.30pm.**

## **Disability Equality**

Leicester College is committed to promoting an inclusive environment for all our learners.

The College works to ensure the additional needs of disabled learners are effectively identified and that reasonable adjustments are made in order to ensure access to the curriculum and to all of our services and buildings.

## **Equality, Diversity and Community Cohesion**

Leicester College has “valuing diversity and promoting equality” as one of its core values. We are committed to promoting equal opportunities and removing any barriers to participation and progression for all our learners. We have in place a Single Equality Scheme which commits us to a range of actions on the key legislative areas of race, gender, disability, age, sexual orientation, gender reassignment and religion and belief equality over the next three years.

We value the diversity of the communities we serve, and take positive steps to promote community cohesion and good relations within the College, which also involves ensuring all our learners feel safe and have their views heard. We also support specific learner groups such as Disabled learner, black and minority ethnic (BME) learner and Lesbian, gay, bisexual, trans (LGBT) learner groups.



## Useful Contacts

### **Accommodation Enquiries**

0116 224 2240

### **Inclusion and Disability Support Team**

0116 224 2053

### **Advice and Guidance**

0116 224 2240

### **Careers Team**

0116 224 2240

### **Counselling, Learning Mentors and Mental Health**

0116 224 2244

### **Day Nursery**

Abbey Park Campus 0116 224 4132

Freemen's Park Campus 0116 224 2059

### **Diversity Manager**

0116 224 2143

### **Disabled Students Allowance**

0116 224 2053

### **Head of Student Services**

0116 224 2226

### **Overseas Learners Advice**

+44 (0)116 224 4111

### **Learner Engagement and Enrichment Team**

0116 224 2081

### **Student Risk Assessment**

0116 224 2138

### **Student Support Manager**

0116 224 4086

### **Student Union**

0116 224 2240 ext 4330



# Learner Voice

**If you choose to study a university level course at Leicester College you can be sure your voice will be heard. There are many ways in which learners can put their points of view across.**

## Student Union

This is a group of learners who are voted into position to form the Executive Committee. There are 24 posts which include the President, Higher Education Officer, Women's Officer, Lesbian, gay, bisexual, transgender (LGBT) Officer, Welfare Officer, International learners' Officer etc, and all have specific roles and responsibilities. The Student Union is run by learners, for learners, and allows you to ensure your voice is heard by the College management.

It's not all meetings though. The Student Union also gets involved in campaigns including World AIDS Day, Volunteering and charity events for the College. It is also actively involved in organising trips, and sporting and enrichment activities.

In short, our union is a vibrant and energetic place to be, and mirrors the College values of equality and diversity.

## Course Representatives

Each Higher Education (HE) course has a course representative who represents the views of learners to management and attends team meetings and the Higher Education Student Forum.

## HE Student Forum

This is a regular forum of all the HE Course Representatives who come together to discuss matters of HE at the College.

## Class sizes

You are in smaller class sizes if you study here, compared to one at a university. This means learners are more in touch with their tutors as they gain more one-to-one time with them.

## Surveys and feedback

There is a good relationship and excellent communication between learners and tutors, but a series of formal surveys and ways to give feedback allows the learner voice to be heard – and importantly acted upon.

## We're Listening to You Learner Satisfaction Results

### You wanted:

- **Improved IT facilities: We did it.** We provided more computers in the libraries. A guest wireless network is also live allowing laptops connections at Freemans Park Campus and Abbey Park Campus.
- **Improved range of food in refectories: We did it.** We're offering a authentic global food range, gluten free products, smoothies and an improved breakfast bar.
- **Updated training kitchens: We did it.** We've installed new industry standard quality cookers and new ventilation system.
- **Better communication: We did it.** All Curriculum Areas now display "you said – we did" posters responding to your views.

### You told us:

- **You would recommend Leicester College as caring, positive and highly organised.**
- **Tutors are motivational and courses excellent.**
- **The College is a safe and welcoming place to learn.**
- **You are proud to be a Leicester College learner.**
- **Leicester College provides great learning opportunities and support for people of all ages leading to better work prospects.**



“Leicester College is the right College for everyone and I would recommend it to all my friends.”

Course Rep

# College Services

## Places to Eat

### Learner and Staff Refectories

#### Abbey Park Campus

Monday to Wednesday 8.30am to 7pm  
Thursday 8.30am to 5pm  
Friday 8.30am to 3.30pm

#### Freemen's Park Campus

Monday to Thursday 8.30am to 7pm  
Friday 8.30am to 3.30pm

#### St Margaret's Campus

Monday to Friday 8.45am to 3.45pm  
term time only.

### Learners, Staff and Public Commercial Catering Restaurant

#### The Gallery Bistro

Open for breakfasts and lunches  
Monday to Friday during term time.  
This bistro at Freemen's Park Campus is  
staffed and run by our Hospitality and  
Catering staff and learners.  
Monday to Thursday 8.30am to 3pm  
Friday 8.30am to 2.30pm

## taste.

taste is a silver service restaurant based  
at Freemen's Park Campus, offering  
delicious lunches and evening meals  
with a licensed bar available.

### Taste is open for lunches

Tuesday to Thursday from 12pm

### Early Bird Bistro menu

Monday 6pm and 7pm

### Silver Service meals

Tuesdays to Thursdays from 6.30pm (last  
orders taken at 7.15pm).

To make a reservation please call  
0116 224 2060.

### Floristry – Flower Trends

Whether you want to pick up a bouquet  
for a friend or order a special occasion  
display for a wedding, the College's own  
floristry shop, Flower Trends, caters for all.  
Situated in the Information Centre  
area at Freemen's Park Campus, Flower  
Trends is open Monday to Friday  
between 9.30am and 3.30pm during  
term time. Please call 0116 224 2220.

### Hairdressing and Beauty Therapy

Serenity is our hair and beauty  
therapy salon at Freemen's Park  
Campus. Based on the third floor, it  
provides the same range and quality  
as high street salons, with the added  
benefit of highly competitive pricing.  
Qualified professionals oversee the  
work of the learners on the course and  
appointments are available during the  
day or evening.

To make an appointment please call  
0116 224 2052.



# College Services

## Day Nursery

Open to both staff and learners, the College has nurseries providing full day care for children from birth to eight years old, at Freeman's Park and Abbey Park Campuses.

## Nursery opening times

**Abbey Park** 8.15am to 5.15pm.

To find out more please call 0116 224 4132.

**Freeman's Park** 8.15am to 5.30pm.

To find out more please call 0116 224 2059.

## Sports Activities

A variety of sports and fitness activities are organised through the Further Education Sports Coordinator at all campuses eg, Salsa, Basketball, Streetdance. Please check the individual campus notice boards for updated information on activities.

## Arts Venue

Leicester College runs the former city centre Phoenix Arts building known as Upper Brown Street. The building is used for live music concerts and performances from the College's Performing Arts learners.

## Libraries

All three campuses have fully stocked and serviced libraries offering an array of books, magazines, journals, internet access, photocopiers, individual study areas and careers advice.

## Accommodation Services

The College provides advice about where to look for accommodation. Full-time learners may receive a Council Tax reduction. Please call 0116 224 2240 for information.

Overseas learners can obtain help and advice on finding accommodation from the International Office on +44 (0)116 224 4111.

## Faith

Leicester College offers a Multi-faith Chaplaincy service that covers a wide variety of faiths and beliefs. The service provides one on one pastoral support, spiritual development and helps to create a college environment that embraces diversity and different faiths.

## Learner Support

The College offers a range of support services for learners who are disabled or have any other additional learning needs or particular requirements (e.g. counselling or mentoring). We also offer support with information, advice and guidance as well as welfare support.

**For further information about the support available please visit our Open Days or call 0116 224 2240.**



Abbey Park  
Campus Nursery



# Associate Universities

In order to enable us to provide a wide range of university-level courses, Leicester College runs several in conjunction with a number of local universities. This means you benefit from a wide range of specialist teaching and resources, while those studying courses accredited by De Montfort University and University of Bedford enjoy access to their services and facilities.

You may spend some or all of your time at the university or study by distance learning. When you complete the course you may be able to apply to progress to the final year of a full honours degree at the university involved.



## Coventry University

Coventry is an evolving and innovative university with a growing reputation for excellence in education. Forward thinking in its approach, it has great facilities and work placement opportunities. The university prides itself on high-quality teaching and the strong vocational emphasis of its courses. It is currently investing £160m in developing its state-of-the-art facilities.



## De Montfort University

We are a partner college of De Montfort University (DMU), which was recently ranked in the top three modern universities by the Sunday Times University Guide league table. We work with DMU to deliver a wide range of courses across several subject areas. DMU has a well-deserved reputation for preparing its learners for employment through innovative teaching and internationally-recognised research. You will also have access to DMU's cutting-edge facilities, extensive library and Students' Union at its City Campus.



## University of Bedfordshire

We run our Teacher Training courses with the University of Bedfordshire and its teacher training has been graded outstanding by Ofsted. Bedfordshire was the highest-climbing University according to the Times Good University Guide 2010, rising 18 places.

The university's Luton campus is undergoing an ambitious £74m upgrade.

# Key to Abbreviations

<b>AA</b>	Advanced Apprenticeship	<b>FHEQ</b>	Framework for Higher Education Qualifications
<b>AAT</b>	Association of Accounting Technicians	<b>FS</b>	Foundation Studies
<b>ACCA</b>	Association of Chartered Certified Accountants	<b>GCE</b>	General Certificate of Education
<b>ACA</b>	Association of Chartered Certified Accountants	<b>GCSE</b>	General Certificate of Secondary Education
<b>AS/A2</b>	The two parts of the modern A level	<b>GNVQ</b>	General National Vocational Qualification
<b>AVCE</b>	Advanced Vocational Certificate of Education	<b>HE</b>	Higher Education
<b>BA</b>	Bachelor of Arts	<b>HEI</b>	Higher Education institution
<b>BEng</b>	Bachelor of Engineering	<b>HNC</b>	Higher National Certificate
<b>BME</b>	Black Minority and Ethnic	<b>HND</b>	Higher National Diploma
<b>BSc</b>	Bachelor of Science	<b>IELTS</b>	International English Language Testing System
<b>BTEC</b>	Business and Technology Education Council	<b>IT</b>	Information Technology
<b>CACHE</b>	Council for Awards in Children's Care and Education	<b>ICT</b>	Information Communication Technology
<b>CAD</b>	Computer Aided Design	<b>LA</b>	Local Authority
<b>CAM</b>	Computer Aided Manufacture	<b>LGBT</b>	Lesbian Gay Bisexual and Trans
<b>C&amp;G</b>	City & Guilds	<b>LLS</b>	Lifelong Learning Sector
<b>Cert Ed</b>	Certificate in Education	<b>MA</b>	Master of Arts
<b>CIMA</b>	Chartered Institute of Management Accountants	<b>MSC</b>	Master of Science
<b>CIPFA</b>	Chartered Institute of Public Finance and Accountancy	<b>Nat Cert</b>	National Certificate
<b>CISCO</b>	Computer Information System Company	<b>Nat Dip</b>	National Diploma
<b>CPD</b>	Continuing Professional Development	<b>NEBOSH</b>	National Examination Board in Occupational Safety and Health
<b>CRB</b>	Criminal Records Bureau	<b>NSA</b>	National Skills Academy
<b>DMU</b>	De Montfort University	<b>NVQ</b>	National Vocational Qualification
<b>DSA</b>	Disabled Students' Allowance	<b>OCR</b>	Oxford Cambridge and RSA
<b>DTP</b>	Desktop Publishing	<b>OFSTED</b>	Office for Standards in Education
<b>DTLLS</b>	Diploma in Teaching in the Lifelong Learning Sector	<b>PGCE</b>	Post Graduate Certificate in Education
<b>ESOL</b>	English for Speakers of Other Languages	<b>QTLS</b>	Qualified Teacher Learning and Skills
<b>EU</b>	European Union	<b>TOEFL</b>	Teaching of English as a Foreign Language
<b>FE</b>	Further Education	<b>UCAS</b>	University and College Applications Service
<b>FD</b>	Foundation Degree		

# Welcome to Leicester

**These are exciting times for Leicester. A £3 billion regeneration drive has put the city firmly on the map as a destination for shopping, entertainment and culture. New cultural, retail, and business quarters have invigorated the city centre – and the work hasn't stopped, with plans to develop the canal's waterside now underway. It really is a city on the move.**

**Leicester has one of the most vibrant and cosmopolitan populations in the country. This diversity gives the city a well-earned reputation for tolerance and respect.**

**The tenth largest city in the UK, Leicester brings all the benefits of city living, but retains its character thanks to having a relatively compact centre. Set in the heart of some of the finest countryside in the Midlands, rural life is never more than a ten-minute drive away.**

#### **A cultural player**

Massive investment means Leicester is now a real cultural player. The city holds the biggest Diwali celebrations outside India and has more than 240 places of worship. The iconic Curve theatre is a truly world-class venue for the performing arts. Phoenix Square, a stunning state-of-the-art film and digital media centre, opened in 2009. An out-of-this-world experience can be had at the National Space Centre.

The city's music and club scene is thriving. Venues on the national gigging circuit include The Shed, Musician and De Montfort Hall. Movie-goers will feel they are being spoiled at Highcross's 12-screen Cinema de Lux multiplex. Leicester College is also getting in on the entertainment act with its 270-seat city centre arts centre, Upper Brown Street, which was officially opened in 2011. Used as a venue for its performing arts training, it is also a live music venue.

#### **Shop until you drop**

Leicester is now rivalling the traditional powerhouses of Nottingham and Birmingham as a shopping destination. John Lewis's decision to create a flagship department store in the Highcross shopping centre confirmed this.

Highcross has 120 high profile shops such as Next, Hugo Boss and Apple. Debenhams and House of Fraser complete the trio of department stores.

There's more to the retail quarter than Highcross, with a pedestrianised centre packed with high street stores, plenty of independent shops in The Lanes and of course, Leicester's famed covered market which is the largest in Europe. On the outskirts of the city is Fosse Park, a major retail park.

The Golden Mile is a stretch of the Belgrave Road which was described as "the closest that Britain comes to an Indian bazaar" by the Daily Telegraph. It is renowned for its authentic Indian restaurants, sari shops and jewellery.

#### **Eating out**

Leicester was named Curry Capital of Britain in 2007. You can eat your way through the regions of Asia, experiencing modern to authentic Indian delicacies.

The city also offers an eclectic array of restaurants to suit your palate and pocket. Whether you fancy Spanish, Italian, Mexican, Greek, Chinese, French, Caribbean or English, you can eat it all in Leicester. Being a two-university city, you'll never struggle to find somewhere for a drink. There are

small independent pubs, champagne bars, large chain pubs and locally-run bars throughout the city.

#### **Location, Location, Location**

Leicester is very much at the heart of the country with excellent links to all parts of the UK. London St Pancras International is just 70 minutes away by train – and a quick change at St Pancras onto the Eurostar means you could be in the centre of Paris in just over four hours.

East Midlands Airport is 30 minutes away by car, and the M1 and M69 motorways means road travel to and from the city is quick and easy.

#### **Sporty types**

The Leicester Tigers are one of the most successful club rugby sides in the northern hemisphere, and can boast local lad and England coach Martin Johnson as a former player. Their Welford Road ground was recently upgraded, taking the capacity up to 24,000.

Leicester City Football Club have enjoyed success in the Premier League.

Leicester was awarded the title of European City of Sport (UK) 2008 and hosted the Special Olympics a year later. At grass roots level, there are hundreds of local clubs and venues for all different types of sports and people of any ability.