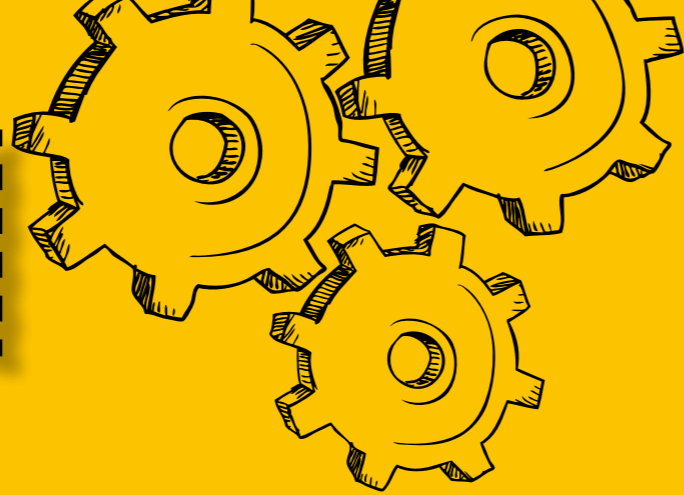


Engineering



Our Engineering courses provide a strong base for both career and educational progression and are well respected throughout the industrial and academic worlds. You can study a Mechanical, Electrical or Electronic Engineering pathway.

You will gain an understanding in core topics such as engineering systems, project management, analytical methods and engineering principles, along with

professional skills which will place you in a competitive position in the job market. Previous learners have progressed onto degrees, or found employment in managerial or technical positions within industry.

As a learner at Leicester College you will use state-of-the-art facilities at our new Technology and Engineering centre.

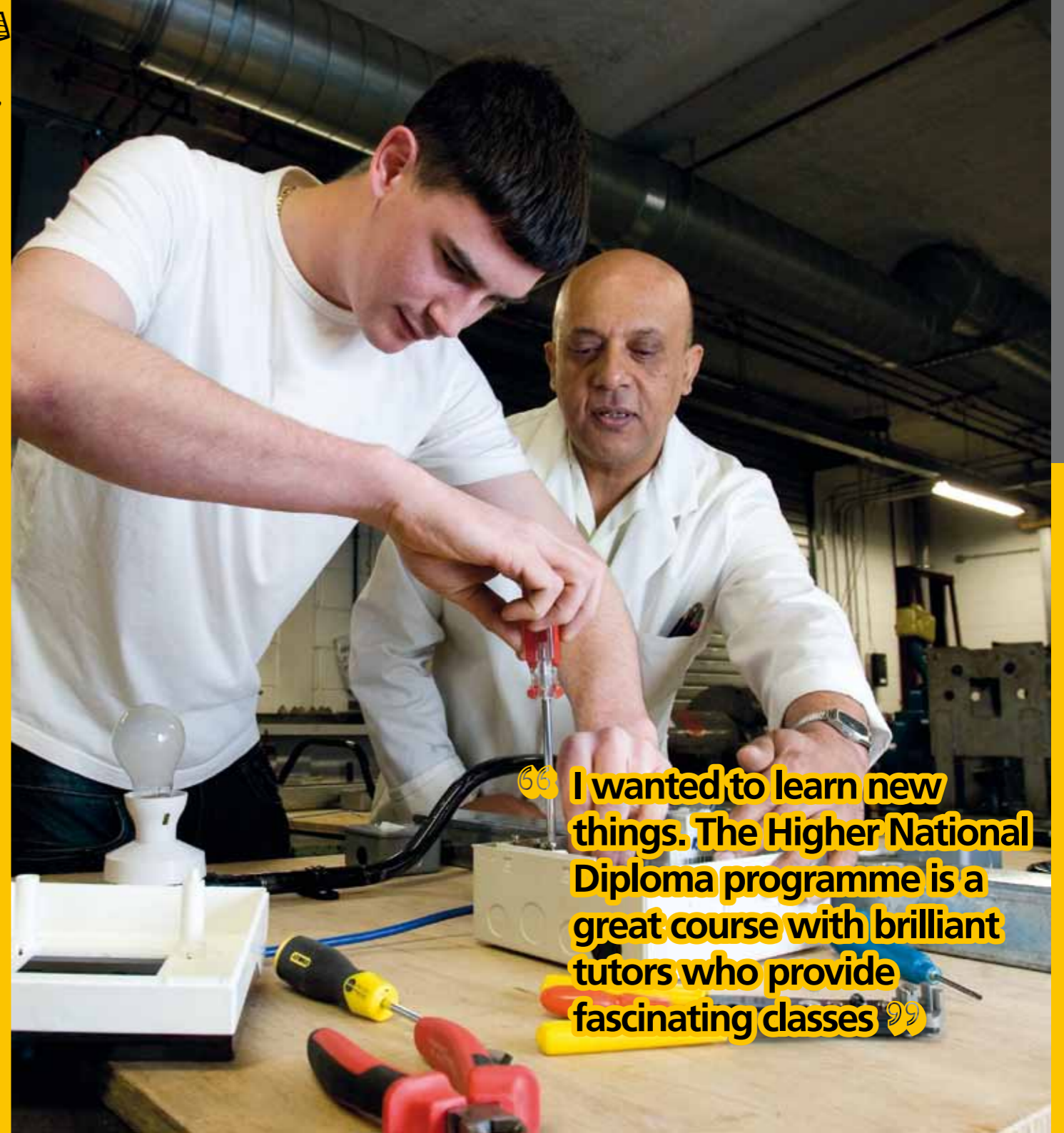


Karina Kowszewicz – Higher National Diploma in Mechanical Engineering

Having completed the equivalent of a degree-level engineering qualification in her native Poland, Karina came to the UK to learn English. She enrolled on an ESOL course at Leicester College.

On gaining employment at an engineering company in the inspection department, she decided she wanted to further her knowledge to help with her job and took the HNC course,

then the HND in Mechanical Engineering. Karina has now progressed from checking parts for the engines of aeroplanes to being involved in inspections of control measurement machines. She has realised she enjoys design and wants to be involved in this aspect of engineering in the future. She said: "I wanted to learn new things. The HND programme is a great course with brilliant tutors who provide fascinating classes."



“I wanted to learn new things. The Higher National Diploma programme is a great course with brilliant tutors who provide fascinating classes”

Higher National Certificate in Engineering (Mechanical/Electrical)

The course is designed to enable engineers in employment to continue their studies at higher level whilst maintaining a career path.

Part-time

Course Code A0336
Course Starts September
Course Length 18 months
Location Abbey Park Campus

To achieve the Higher National Certificate in engineering eight units must be completed to an acceptable standard.

Mandatory core units include: Analytical methods for engineers, engineering science and project design.

Common units include: Business management techniques for engineers, management projects.

Specialist units in mechanical include: mechanical principles, application Pneumatics and hydraulics, materials engineering.

Specialist units in electrical/electronic include: electrical and electronic principles, programmable logic controllers, electrical power, combinational and sequential logic.

What do I need to start?

GCSE English, maths and Science grade C or equivalent (without this you will be asked to complete a Literacy test)

plus either:

- Level 3 National Certificate
- Level 3 NVQ/VRQ or similar in a related subject
- relevant Access to HE course.

All potential candidates will have to complete an initial assessment (Maths, Science and English)

We welcome applications from learners with Advanced Apprenticeships and adult learners who do not match the standard entry requirements but who can demonstrate a willingness and commitment to studying this subject and who can evidence academic, professional or vocational experience in a related field.

International learners please see page 102.

How long is the course?

18 months, part-time - one day a week.

How will I be assessed?

Assessment is continuous throughout the course.

What is the fee?

The fee is currently under evaluation and yet to be confirmed. Please call 0116 224 2240 for the latest fee information.

Who is the awarding body?

Edexcel.

What else do I need to know?

Guest lecturers may contribute to the course as appropriate. Formal visits to the Engineering sector or trade shows will also be considered if relevant to the course and practicable.

What can I do next?

You may opt to continue to a full degree programme or "top-up" to the HND in Engineering at the College. The HNC could provide exemption from the first year of an honours degree.

Career opportunities could include managerial and technical positions in the Mechanical or Electrical sectors of the Engineering industry.

How do I apply?

Please apply to Leicester College. Call 0116 224 2240 for further information.



Higher National Diploma "top up" in Engineering

This course is designed to enable engineers in employment to continue their studies at a higher level whilst maintaining a career path.

Part-time

Course Code	A0046
Course Starts	September
Course Length	One Year
Location	Abbey Park Campus

The course is designed to enable holders of a Higher National Certificate to achieve a full Higher National Diploma.

To achieve this, six further units are required. There are four common units and two optional units depending on your chosen pathway.

The four common units are:

- engineering systems
- applications of hydraulics and pneumatics
- mechatronic principles
- project management.

Optional units are:

- mechanical – CAD/CAM and manufacturing processes
- electrical/electronic – utilisation of electrical energy and control systems.

What do I need to start?

You would normally be expected to have a Higher National Certificate in a relevant subject.

We welcome applications from adult learners who do not match the standard entry requirements but who can demonstrate commitment to studying this subject at University level, and who can evidence academic or vocational experience in a related field.

International learners please see page 102.

How long is the course?

One year, part-time.

How will I be assessed?

Assessment is continuous throughout the year.

What is the fee?

The fee is currently under evaluation and yet to be confirmed. Please call 0116 224 2240 for the latest fee information.

Who is the awarding body?

Edexcel.

What else do I need to know?

As this course is intensive, additional personal study, outside of timetabled hours is expected.

What can I do next?

On successful completion of the course you may continue to a full honours degree programme. The HND should provide exemption from the first two years of an honours degree.

This qualification is well regarded throughout industry and the academic world. Career opportunities include managerial and technical positions in the Mechanical or Electrical sectors of the Engineering industry.

How do I apply?

Please apply to Leicester College.
Call 0116 224 2240 for further information.

